



ANALYSIS: LGBTQ Women Candidates Win Elections at Higher Rates

SUMMARY AND BACKGROUND

An analysis of Victory Fund electoral data from 2007 – 2016 finds LGBTQ women candidates endorsed by Victory Fund won their elections at significantly higher rates than LGBTQ men candidates, and that the difference is statistically significant. LGBTQ women also perform well in years when Democrats struggle at the polls, despite LGBTQ men performing worse in those years. The disparity is notable given research shows women and men as a whole win elections at approximately the same rate.

The electoral advantage for LGBTQ women exists despite continued underrepresentation in government – which is primarily the result of fewer LGBTQ women running for office. Both women and LGBTQ people wait longer in their careers before considering themselves qualified to run, compared to straight men with similar levels of experience. Furthermore, women and LGBTQ people are less likely to be encouraged to run for office by friends, family and party officials. Both factors negatively influence LGBTQ women’s likelihood of running. Yet when LGBTQ women decide to run, they are typically better qualified than their challengers and have planned their runs for longer, which may contribute to the higher win rates.

The data analysis further emphasizes the need for more LGBTQ women to run for office – with a goal of increasing representation in government for both LGBTQ people and women. Victory Institute is working to recruit and train a diverse pipeline of LGBTQ leaders who run for public office and can advance equality. More information can be found on the [Victory Institute website](#).

FINDINGS

Victory Institute reviewed the win/loss records and genders of 1,162 Victory Fund-endorsed candidates between 2007 and 2016. Among the findings:

- LGBTQ women won their elections 70.3 percent of the time, compared to 60.9 percent for LGBTQ men.
- LGBTQ women maintain consistent win rates in tough election cycles for Democrats, winning 81 percent of races in 2010 compared to 57 percent for LGBTQ men, and winning 70 percent of races in 2014 compared to 47 percent for LGBTQ men. Although Victory Fund is non-partisan, the vast majority of its candidates are Democrats.
- LGBTQ women run for office at lower rates than LGBTQ men, accounting for just 364 of the 1162 endorsed candidates in the last decade.

FIGURES & TABLES

Figure 1: Total number of Victory Fund endorsed candidates, by gender and year

Number of men and women endorsed, 2007-2016

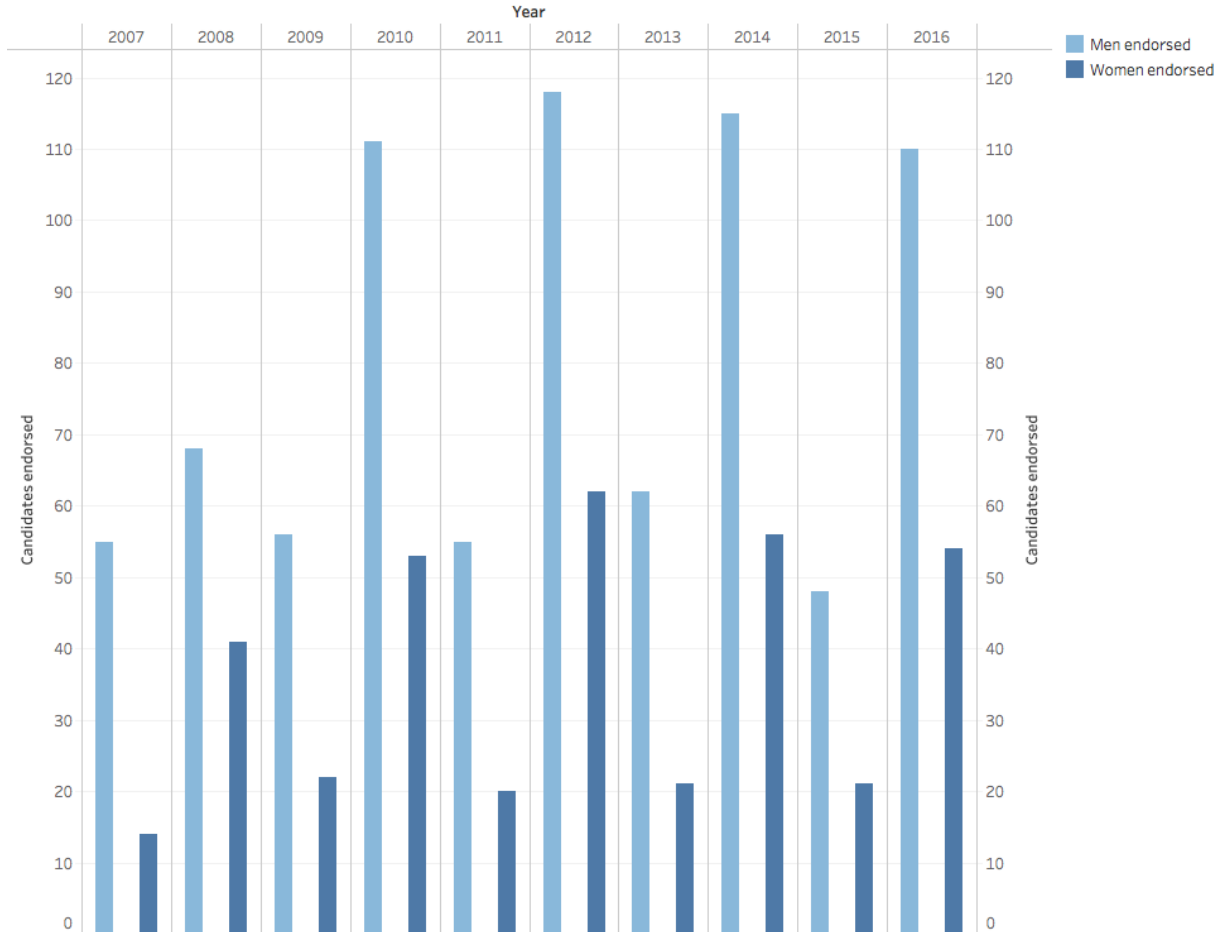


Figure 2: Victory Fund endorsed candidates' win rates, by gender and year

Win rate for men vs. women, 2007-2016

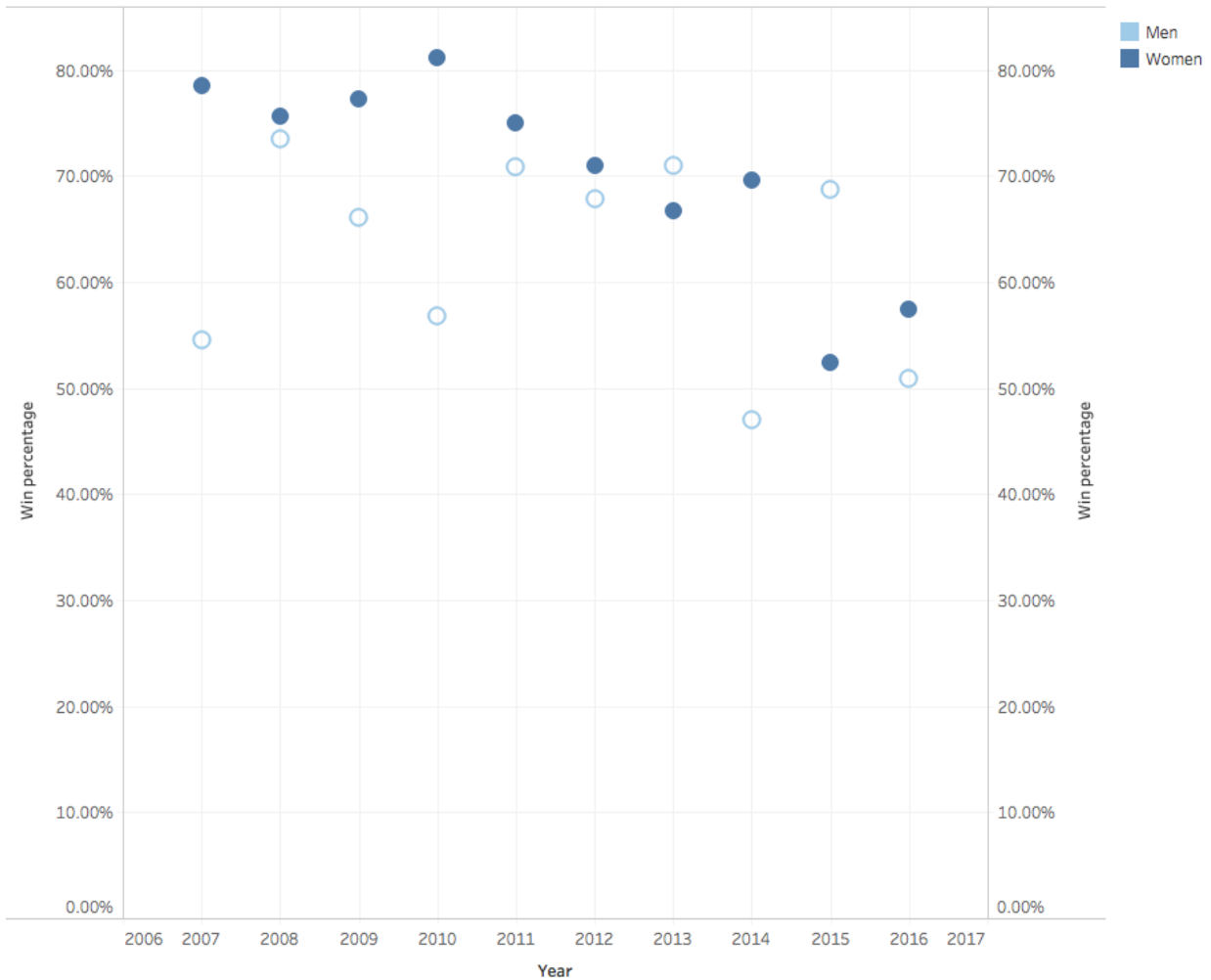


Table 1: Number of Victory Fund endorsed candidates and winning candidates, by gender and year

Year	Total endorsed	Total women	Women win	Total men	Men win
2016	164	54	31	110	56
2015	69	21	11	48	33
2014	171	56	39	115	54
2013	83	21	14	62	44
2012	180	62	44	118	80
2011	75	20	15	55	39
2010	164	53	43	111	63
2009	78	22	17	56	37
2008	109	41	31	68	50
2007	69	14	11	55	30
Total	1162	364	256	798	486

Table 2: Victory Fund endorsed candidates' win rates, by gender and year

Year	Total win percentage	Women win percentage	Men win percentage
2016	53.1%	57.4%	50.9%
2015	63.8%	52.4%	68.8%
2014	54.4%	69.6%	47.0%
2013	69.9%	66.7%	71.0%
2012	68.9%	71.0%	67.8%
2011	72.0%	75.0%	70.9%
2010	64.6%	81.1%	56.8%
2009	69.2%	77.3%	66.1%
2008	74.3%	75.6%	73.5%
2007	59.4%	78.6%	54.6%
Total	63.9%	70.3%	60.9%